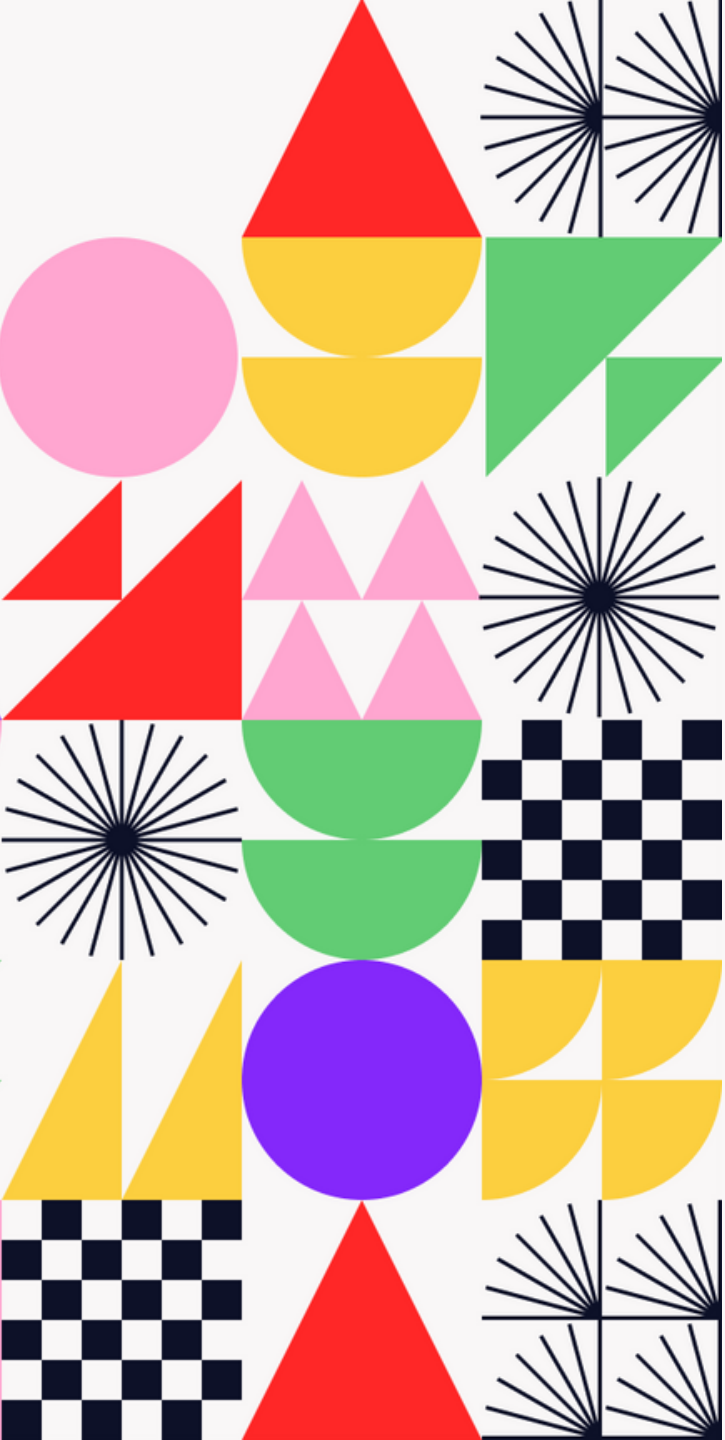


**ADVANCING DATA
STANDARDIZATION,
TRANSPARENCY AND
COLLABORATION IN
FOOD & BEVERAGE
SUPPLY CHAINS**

OCTOBER 2023

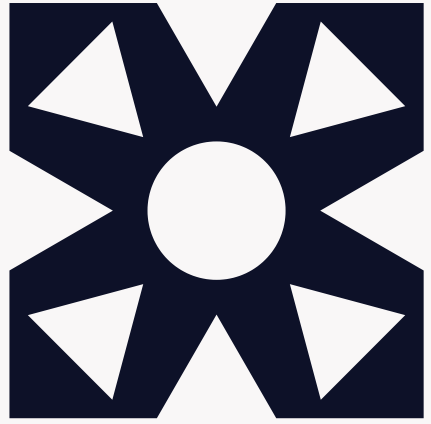




What we'll cover

CONTENTS

- ☀ What is OS Hub & Why We Exist
- ☀ Demo
- ☀ Sharing Data on OS Hub: Tips & Tricks
- ☀ Making the Most of Open Supply Chain Data
- ☀ Q&A



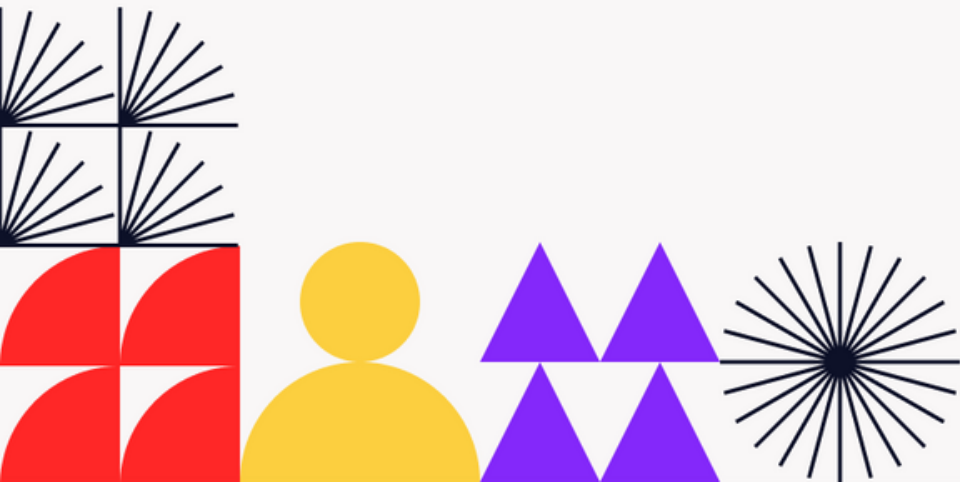
OPEN SUPPLY HUB

Building a world where supply chain data is **open**, **trusted** & **harnessed to benefit people and planet**





Historically, supply chain data has been both hard to find and hard to work with.





Specifically, we're talking about:

Low quality data, coupled with fee-based / siloed IDs

The issue

The quality of core supply chain data, such as site name & address, is poor and varies widely across datasets. Many databases either lack unique identifiers entirely, or depend on fee-based / siloed ID schemas.

What this means

Seamless data exchange isn't possible without a unique, open ID running across all systems and datasets, to which meta data can be standardized & matched.

Disparate, incomplete, closed databases

The issue

Data is stored in many places with different levels of access, and the data they hold only shows a small snapshot of the full picture of what's happening at a facility.

What this means

It is hard to work comprehensively with supply chain data when the data itself needs to be tracked down across sites and systems, with various levels of openness and access.





Why does this matter?

To unlock opportunities for collective action at scale, we need a clean, base dataset that provides:

Trustworthy meta-data

A clear understanding of global supply chain locations and who is connected to them.

Canonical IDs to connect datasets

A *Rosetta Stone* ID that decodes and connects various ID schemes and datasets, promoting interoperability.

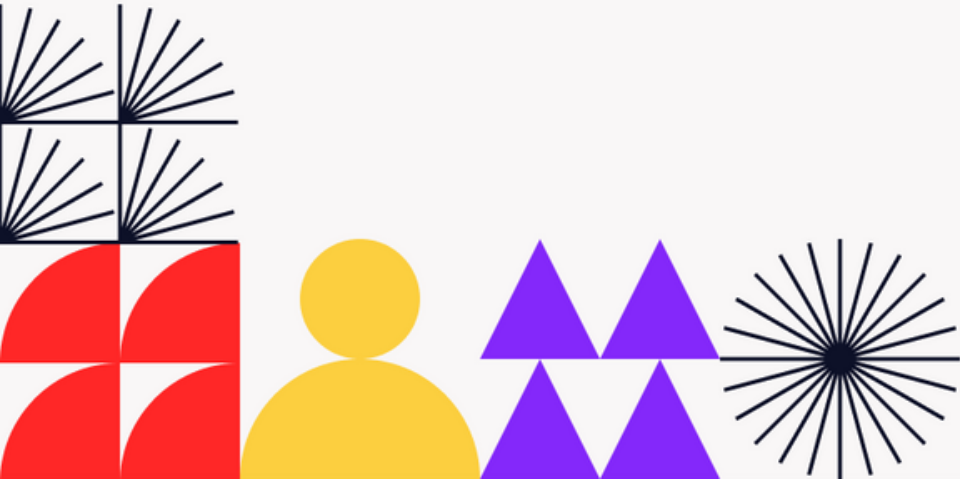
Open access for all

The ability for all stakeholders to easily find, contribute to, and work from the same basic information.





**Universal access to a map of
global production sites and
their relationships can unlock
countless opportunities.**



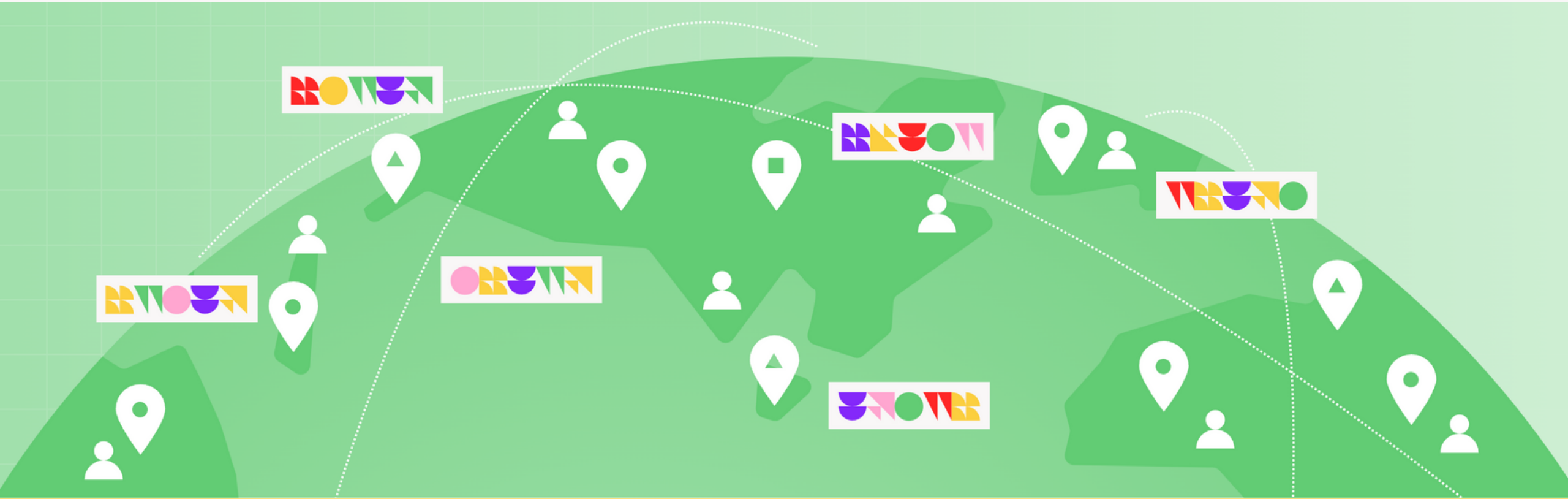


OPEN SUPPLY HUB

is making that
possible.



Open Supply Hub is a supply chain data platform, that anyone can search and contribute to. It shows production locations across the world and who is connected to them, making that data easy for anyone to work with.

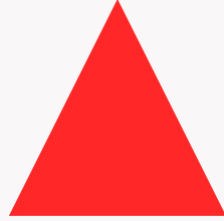


We provide:



A Reliable, Interoperable Dataset...

All data contributed to the platform is cleaned and processed by a matching algorithm and then assigned an industry-standard ID that is free and accessible to all.



Living in a Public Good...

Governed under an open data model, anyone wishing to share, search, and/or integrate supply chain data can do so in a single place - quickly becoming one of the largest open supply chain datasets available.



That Enables Global Collaboration

The user-generated dataset gives visibility into which organizations are connected to which facilities, with search enabled for overlaps between organizations, accelerating collaboration.





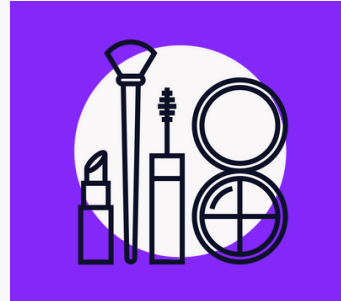
Which sectors can you find in OS Hub?



Apparel & Accessories



Automotive



Beauty



Consumer Goods



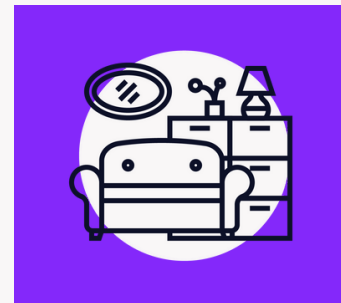
Electronics



Energy & Utilities



Food & Beverage



Furniture



Sporting Goods

Commodities & Deforestation



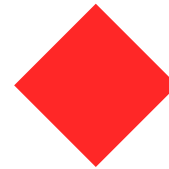
The commodities most closely tied to deforestation and the sectors that touch them are at a key crossroads when it comes to transparency.

This is the time for openness, standardization, and collaboration.



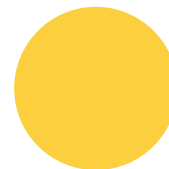
More & more data is being surfaced and published

Make sure it's interoperable, standardized and able to work cross-commodity



Deforestation legislation is quickening the pace

Supply chain actors are working fast to find the right suite of tools to meet requirements



Calls for collaboration are growing stronger

The only way forward is to work together. The first step is opening up data.



Imagine:



Building collaborative grievance mechanisms



Co-investments in renewable technology at production sites



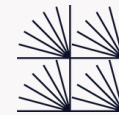
Sharing information and resources in crisis moments



Collective action to reduce water risk in a region



Quickly identifying partners or facilities for new program pilots



Sharing auditing, due diligence & reporting



Efficient and effective resolutions for violations



Maximizing access to information when making decisions around “responsible disengagement”

And more. Made possible by open data.



FEATURES: A PUBLIC GOOD

Use www.opensupplyhub.org to:

Find overlaps between supply chains/datasets



Search & download cross-sector supply chain data

Share the production sites you are connected to



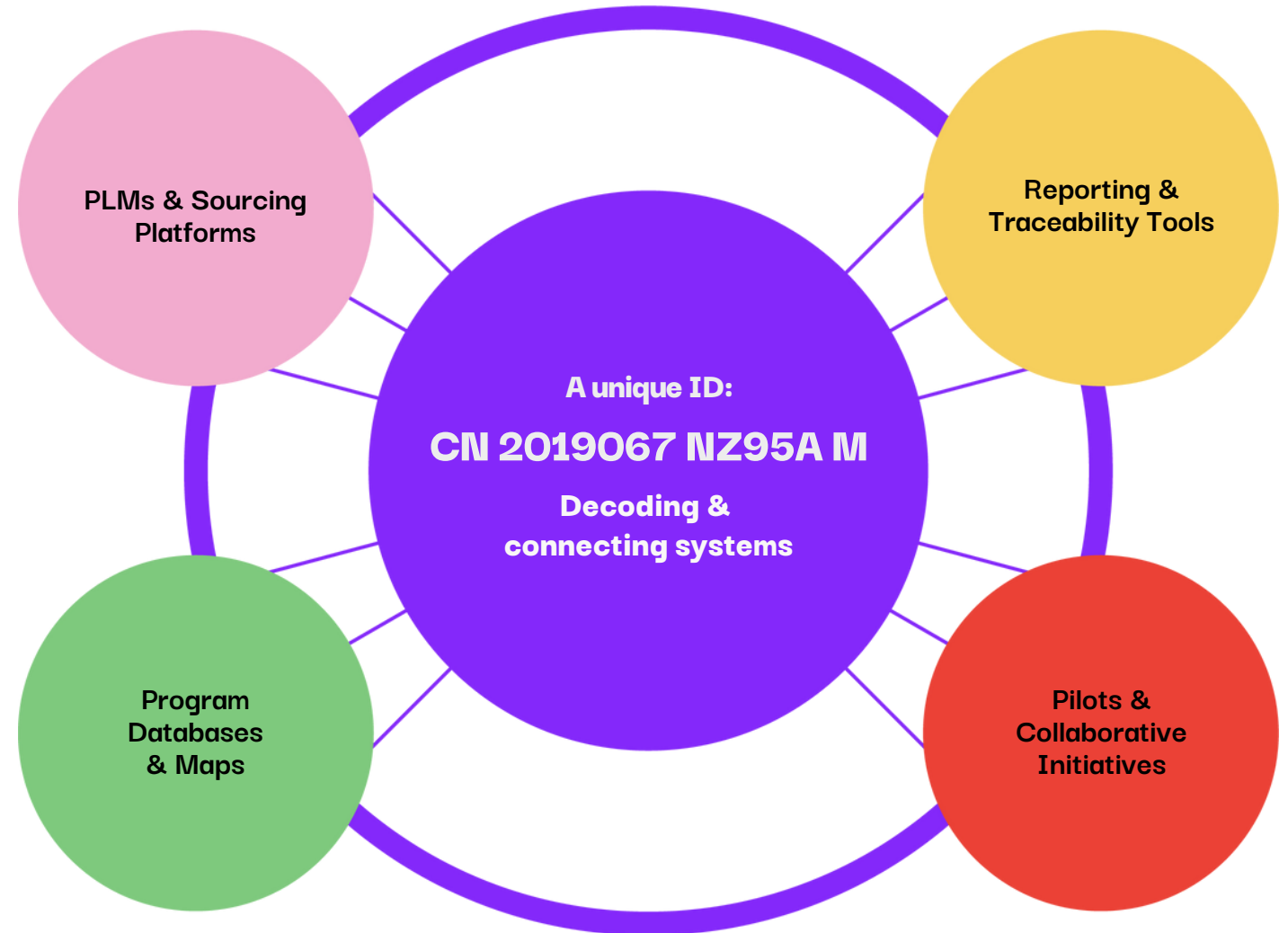
Have data cleaned and processed through a matching algorithm

Access OS IDs for production sites



FEATURES: THE OS ID

Free & accessible production point ID for all sectors, stakeholders, geographies, and systems to live alongside location information, meta data and other IDs.





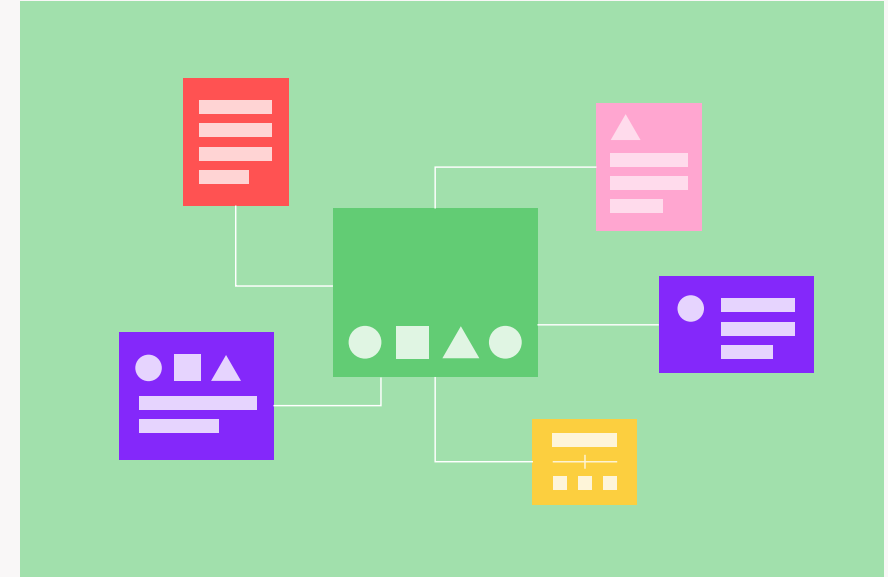
FEATURES: PREMIUM



Embedded Map

Automatically display your data on your own website as a customized map

[View Live Examples](#)



API

Automatically push and/or pull data + OS IDs between your system and OS Hub

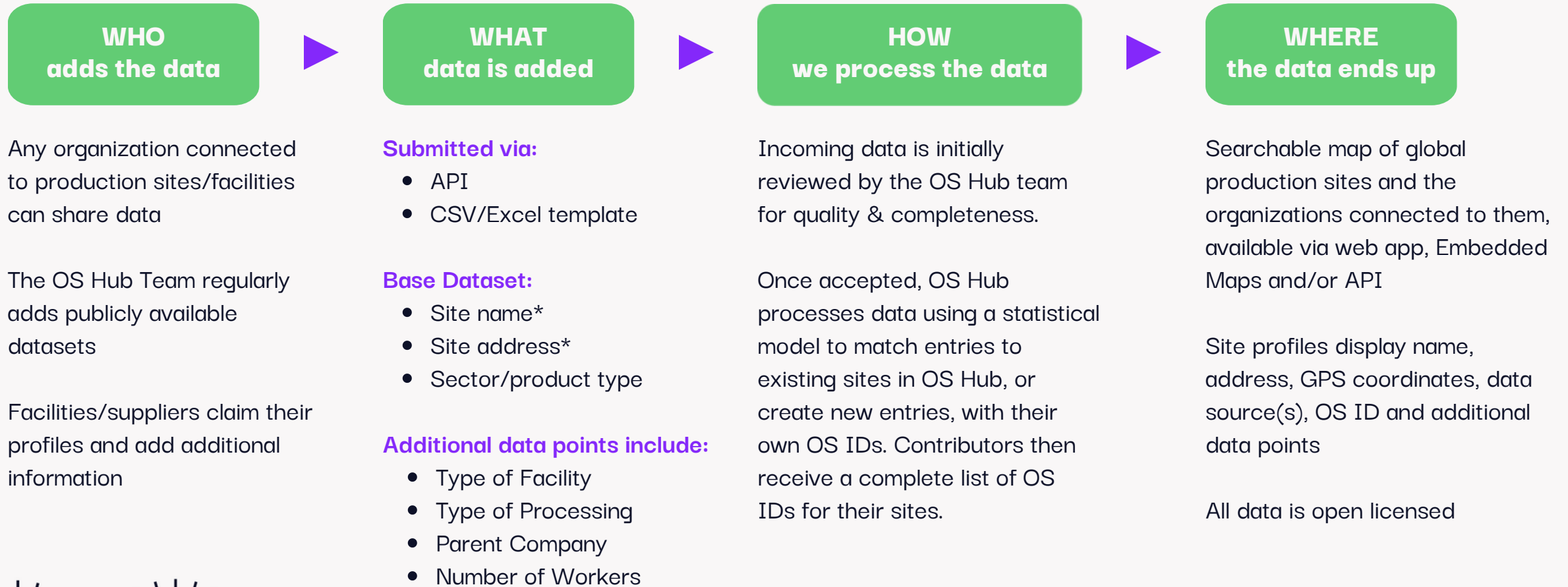


How to add data to OS Hub





How does data move through OS Hub?



*required data points





Preparing Data



Data Formatting 101

 **country (required)**

Full country name in English

or ISO alpha-2

or ISO alpha-3

 **name (required)**

Complete facility name & incorporation details (Pvt., Ltd., etc.).

 **address (required)**

Complete address information for the facility. Use of the facility's local address convention is recommended. Commas are the standardized punctuation to separate address details.

 sector/product type(s)

Select value(s) that represent a brand's product categories, the facility's production activities and/or the final products being produced. Use vertical bar (|) to separate values.

 facility/processing type

Select value(s) that represent the facility's production activities. Vertical bar (|) as separator.

 number of workers

Submit raw values or ranges for the number of workers

326 OR < 500

 parent company

If known, you can enter parent company information. If unknown, leave blank. No N/A.

Helpful Tips to Prep Your Data





- No quotation marks (””). Single quotes only, if needed.
- Remove any [N/A] text in concatenated cells.
 - Find & replace [N/A]
- Blank columns can be processed, [N/A] or [Unknown] values are not necessary and will become a data point on the platform.
- Utilize single commas to separate address elements.
 - **EX:** Bakker Van De Kletersteeg Hessenweg 56, 3835 Pk Stoutenburg
 - **EX:** Servidão Navegantes do Mar, Number 190, Ingleses do Rio Vermelho, 88058-762, Florianópolis, Santa Catarina, Brazil
- One address per row. Unique address records aid in identifying facility groups.
- For geolocation purposes, facilities located in Hong Kong, Macau, & Taiwan do not process correctly when China is listed as the country.
- The vertical bar (|) is necessary for any cell with multiple inputs.
 - **Product_type EX:** Chicory | Lettuce | Vegetable oils | Blended butters
 - **Sector EX:** Beauty | Food | Food Manufacturing | Refinery

FACILITY

G's Espana

OS ID: ES20232919KSEZD

Report Copy Link Copy OS ID

ADDRESS
 Crta. Jimenado Km 1, Torre Pacheco, Murcia, 30700 - Spain
 March 24, 2023 by John Lewis Partnership
[5 more entries](#)

GPS
 -0.968187, 37.748812
[6 more entries](#)

NAME
 G's Espana
 March 24, 2023 by John Lewis Partnership
[4 more entries](#)

SECTOR
 Food
 October 5, 2023 by John Lewis Partnership
[1 more entry](#)

PROCESSING TYPE
 Factory Processing Manufacturer
 Primary Producer Agriculture
 September 12, 2023 by Asda
[2 more entries](#)

PRODUCT TYPE
 Chicory
 Lettuce
 September 12, 2023 by Asda
[2 more entries](#)

NUMBER OF WORKERS
 1083
 October 5, 2023 by John Lewis Partnership
[5 more entries](#)

Facility Upload Details

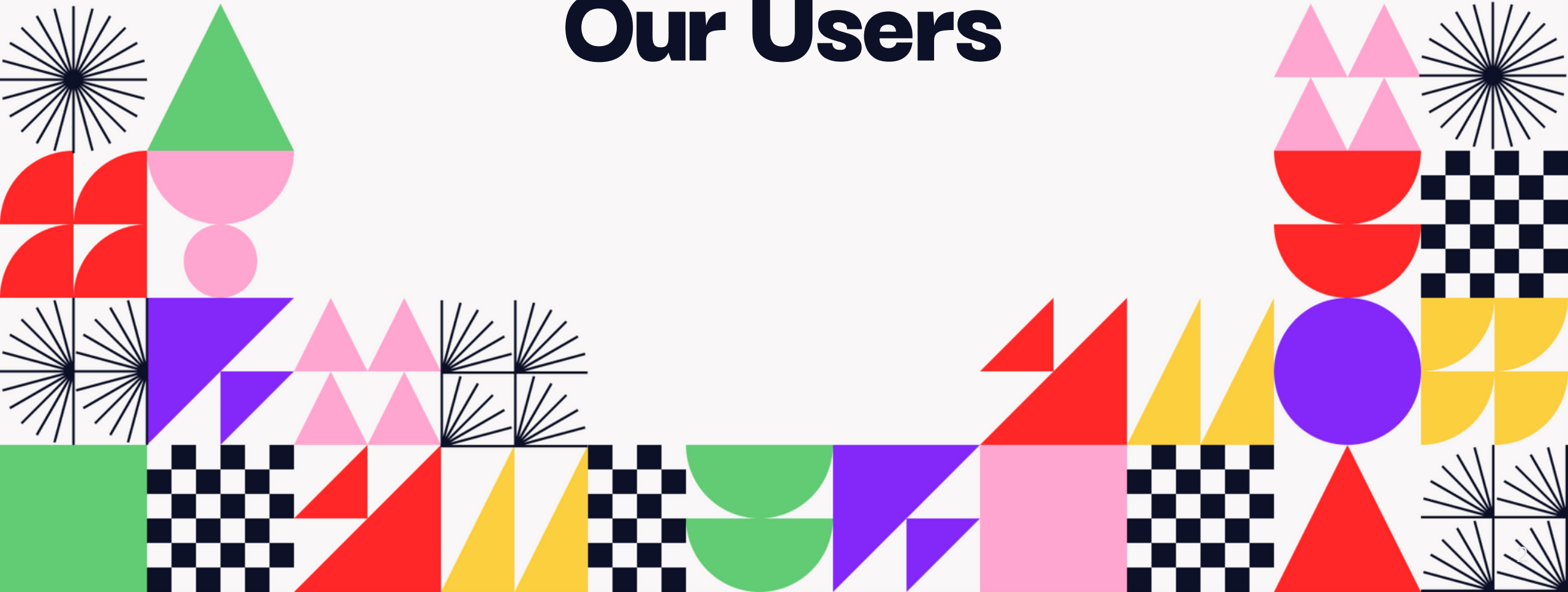
country	name	address	sector_product_type
Spain	G's Espana	Crta. Jimenado Km 1, Torre Pacheco, Murcia, 30700 - Spain	Agriculture Farming Food Food Industry Chicory Lettuce

facility_type_processing_type	number_of_workers	parent_company
Factory Processing Manufacturer Primary Producer Agriculture Grower	1083	

 **NOTE:** The use of vertical bars (|) as a separator.



Our Users





A dynamic, growing community

OS Hub has:

200,000+

Sites listed

3,300+

Average monthly active users,
Jan '23 - Jun '23

815+

Data contributors





Hundreds of organizations share data with and use OS Hub

BRANDS & RETAILERS

Amazon, H&M, HEMA, John Lewis Partnership, Target, The Walt Disney Company

- ✦ Reliable Base for ESG Reporting
- ✦ Unique IDs for Supplier Facilities
- ✦ Collaboration Opportunities

INDUSTRIAL ORGANIZATIONS

amfori, Fair Trade Certified, Oeko-Tex, Textile Exchange, Wordly

- ✦ Unique IDs Enable Interoperability
- ✦ Facilitate Remediation and Collaboration
- ✦ Automatic Syncing via API

CIVIL SOCIETY

Business & Human Rights Resource Centre, Fashion Revolution, Solidarity Center, Worker Rights Consortium, WWF

- ✦ Speed up Remediation Processes
- ✦ Combine Data Sets for Further Insights
- ✦ Identify Potential Partners

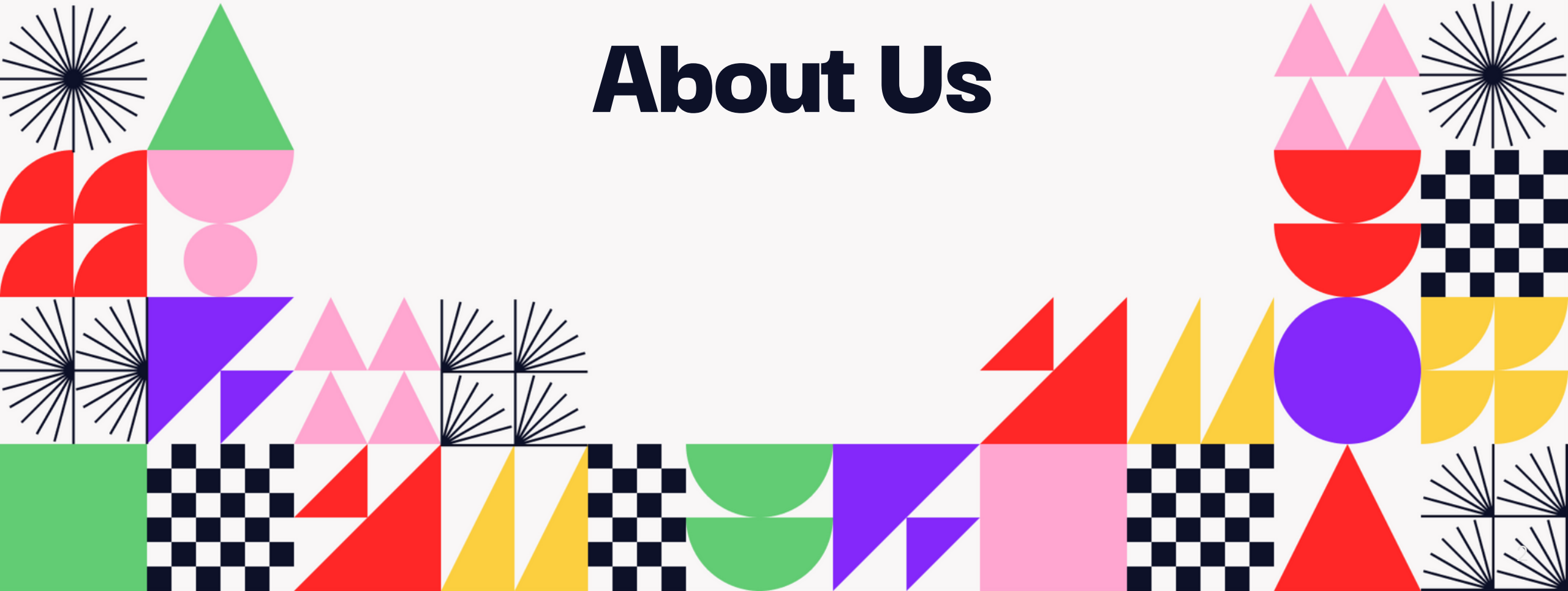
MANUFACTURING GROUPS

Arvind Limited, Delta Galil, Elevate Textiles, Hirdaramani, Pou Chen Group

- ✦ Visibility on Global Platform
- ✦ Eliminate Confusion for Customers
- ✦ Search for Partner Facilities



About Us





Governance

Open Supply Hub is a 501(c)(3) nonprofit organization, registered in the USA.

To ensure our organization, model and data continue to serve the many types of stakeholders needed to improve supply chains, we are governed by a global multi-stakeholder Board of Directors representing a diverse range of industry actors, from unions and human rights representatives, to multi-national corporations and open data experts.



Brands & Retailers



Civil Society



Facilities



Multi-Stakeholder Initiatives



Researchers



Service Providers

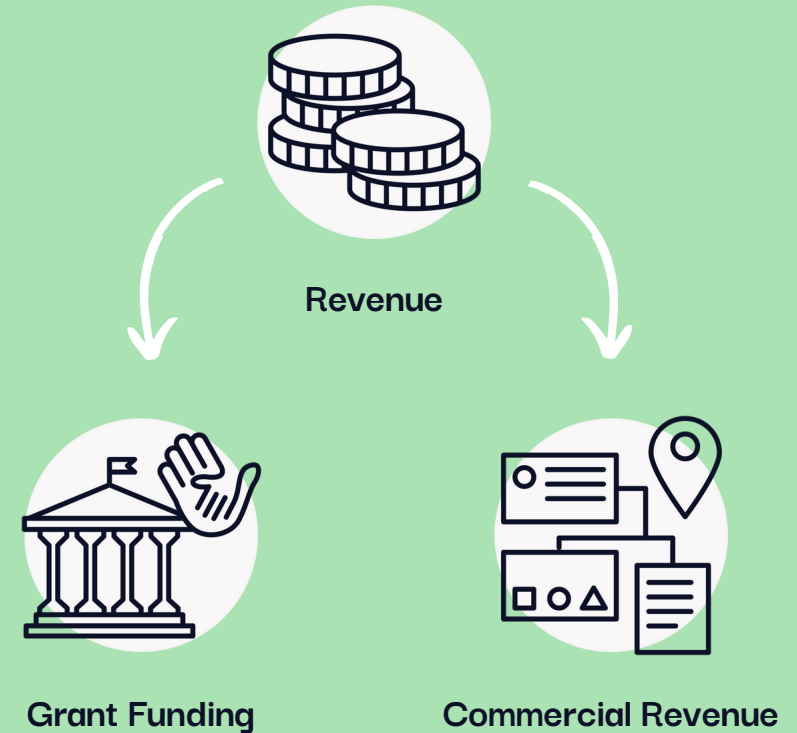


Business Model

Open Supply Hub operates a mixed revenue model

- Grant funding from a mixture of philanthropic, corporate and governments
- Commercial revenue from Premium Features*

*Qualifying civil society organizations are able to apply for free access to Premium Features, subject to organizational need





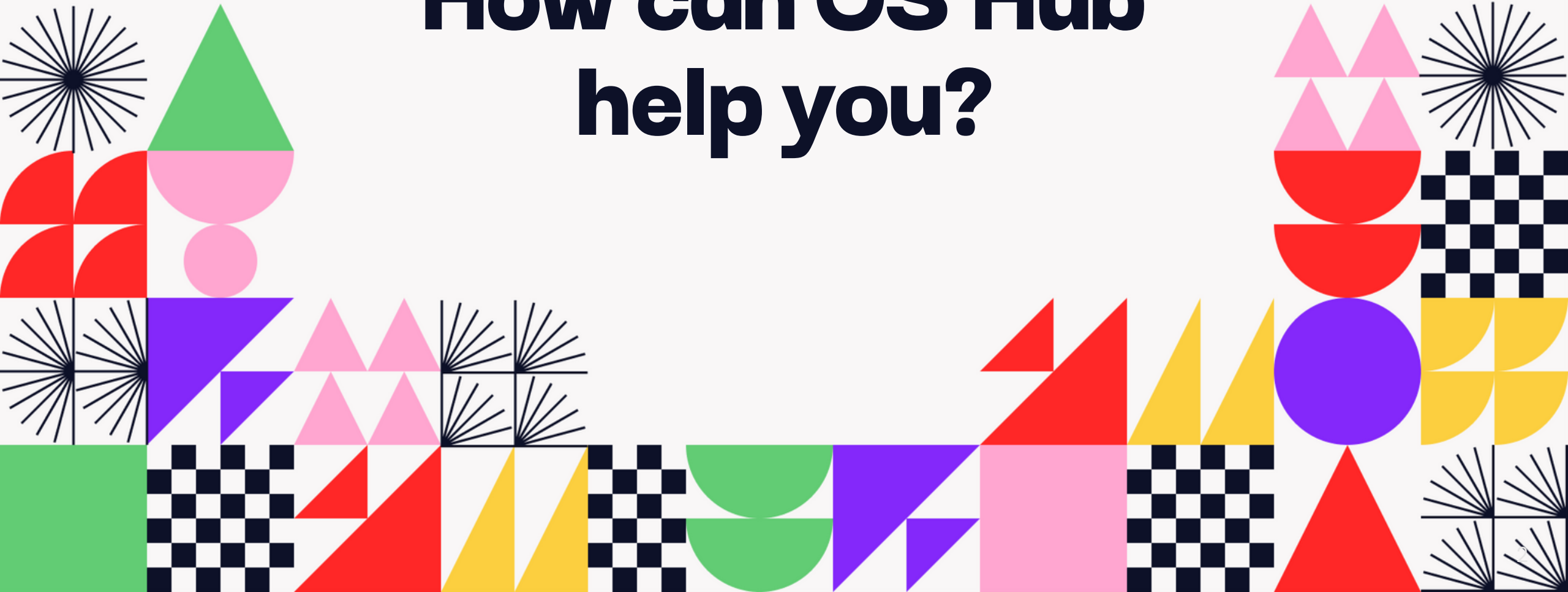
**OPEN
SUPPLY
HUB**

OS Hub is a global, remote-working team, with staff engaging with customers and community around the world. We're also building a team of Community Managers in countries such as Bangladesh, Brazil, India and Türkiye, with more to come.





How can OS Hub help you?



Benefits for You



Collaboration Opportunities

Understand who else is connected to current and prospect sites or priority/at-risk regions, identifying new opportunities for collaboration



Interoperable IDs

Save time and money by processing site names and addresses against OS IDs, to easily manage and connect data internally and externally



Show Commitment to Transparency

Demonstrate your commitment to open, transparent supply chain data



Reliable Base for ESG Reporting

As more and more legislation and reporting requirements begin, ensure you are working from a clean, reliable base dataset to inform the rest of your reporting.

Legislation & ESG Reporting

The volume of sustainability & due diligence legislation continues to grow. The cost of **anticipating** these requirements is always **lower** than being on the back foot and responding to mandates.

Organizations need to start by understanding where their production sites are located in order to then **efficiently** measure or report on social or environmental conditions.

How OS Hub Can Help



Know & show your supply chain

A core step to enable you to conduct due diligence is knowing and sharing your supply chain. Open Supply Hub allows you to openly display this data, putting you in a strong position to implement effective due diligence.



Make your data interoperable

To effectively respond to legislative demands, you will need to work with others: service providers, reporting tools, remediation partners and more. If your data isn't interoperable, this will be a hugely time-intensive - if not impossible - feat.



Find collaborators

Whether you're working on risk identification, remediation, grievance mechanisms, or something else: ensure you are collaborating with other organizations connected to your suppliers or in the same geographic area, to share the burden and maximize effectiveness.





Brands & Retailers Sharing Data in OS Hub

Search Supply Chain Data from Sector Leaders Including:

- adidas
- ALDI (Nord & Sud)
- Amazon
- Armani Group
- Asda
- Boohoo Group
- Brooks Sports
- Burton Snowboards
- Columbia Sportswear
- Coop Genossenschaft
- Dick's Sporting Goods
- de Bijenkorf
- Gap Inc.
- Hema B.V.
- H&M Group
- Kmart & Target Australia
- Lojas Renner
- JC Penney
- John Lewis Partnership
- KMD Brands
- MANGO
- Mammut
- MEC
- Neiman Marcus Group
- Nordstrom
- Patagonia
- PVH
- REI
- River Island
- Sainsbury's Argos
- Stella McCartney
- Sunrock
- Tesco
- The Very Group
- VF Corporation
- Target Corporation
- Walt Disney Company
- Zalando
- ZEEMAN



API Connections & OS IDs

Whether via API connection or manual entry by members/participants, you can find OS IDs incorporated into industry-leading platforms across sectors, including:

- ✱ Alliance for Water Stewardship
- ✱ Amfori (BSCI)
- ✱ BHRRC
- ✱ Bluesign Technologies
- ✱ Circular.Fashion
- ✱ CSR Hub
- ✱ Fairtrade
- ✱ Fair Trade Certified
- ✱ Fair Factories Clearinghouse
- ✱ Find Sourcing
- ✱ Higg
- ✱ Labor Solutions
- ✱ Oeko-Tex
- ✱ SLCP
- ✱ Retraced
- ✱ Trustrace
- ✱ WikiRate
- ✱ ZDHC



Are there risks?

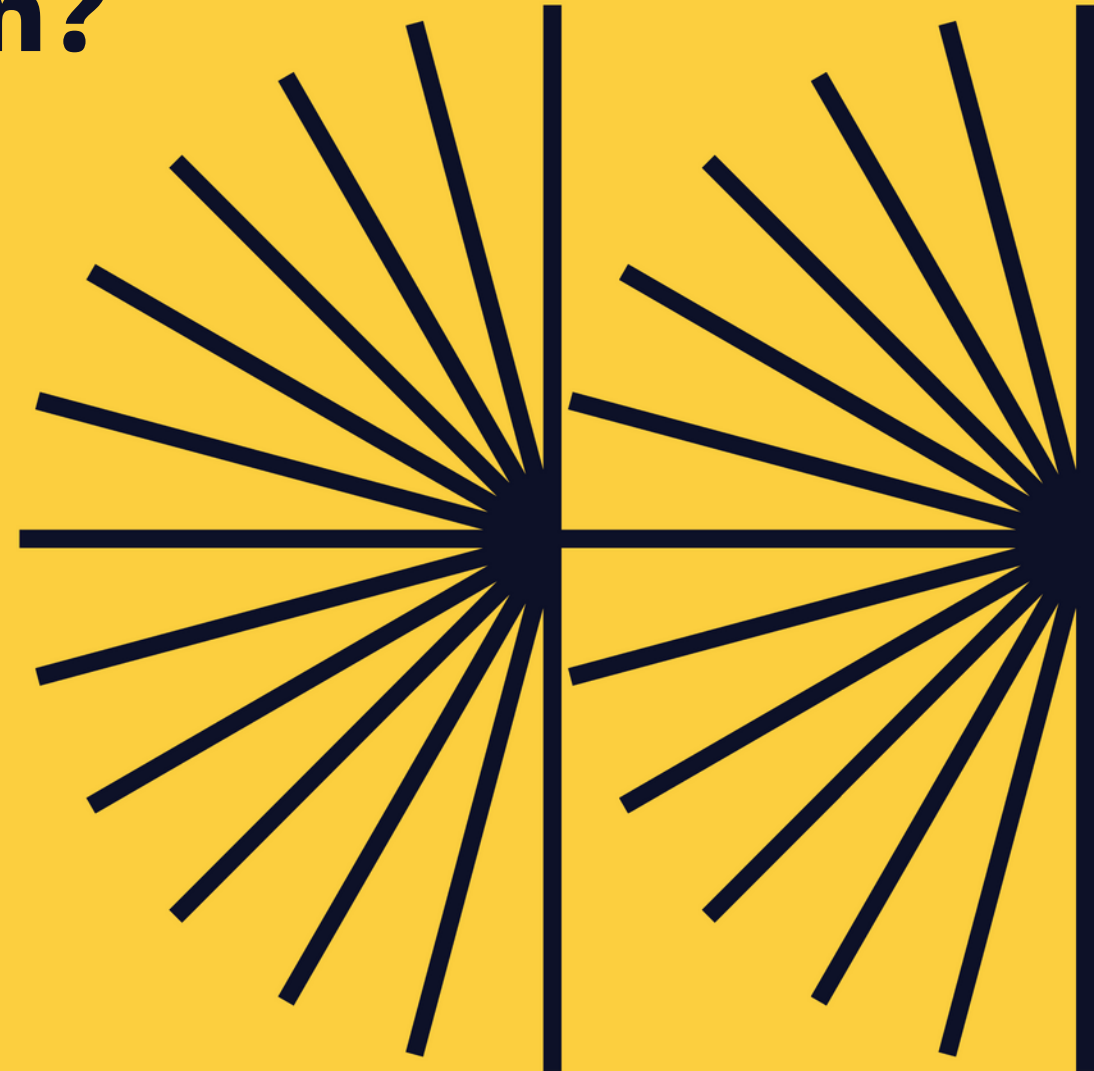
Here are some of the most common questions we receive about the risks of disclosing supply chain data in general, and on OS Hub. Ultimately, we hope you'll find that the benefits of open data far outweigh what are quickly becoming minimal and out-dated risks.



If we open up our data, won't civil society organizations come after us for issues in our supply chain?

Opening up your data means that:

- Civil society organizations are able to reach out to you directly to resolve issues, rather than turning to the press or more public tactics. This is often the preferred solution for both parties.
- Civil society organizations can also proactively reach out to share information and prevent issues. If your goal is to conduct effective due diligence and make improvements, opening up data allows you to get more information, make more informed decisions, and demonstrate that you've made changes based on what you have learned. Keeping your data closed hinders that process and can generate more risk in the long-run.





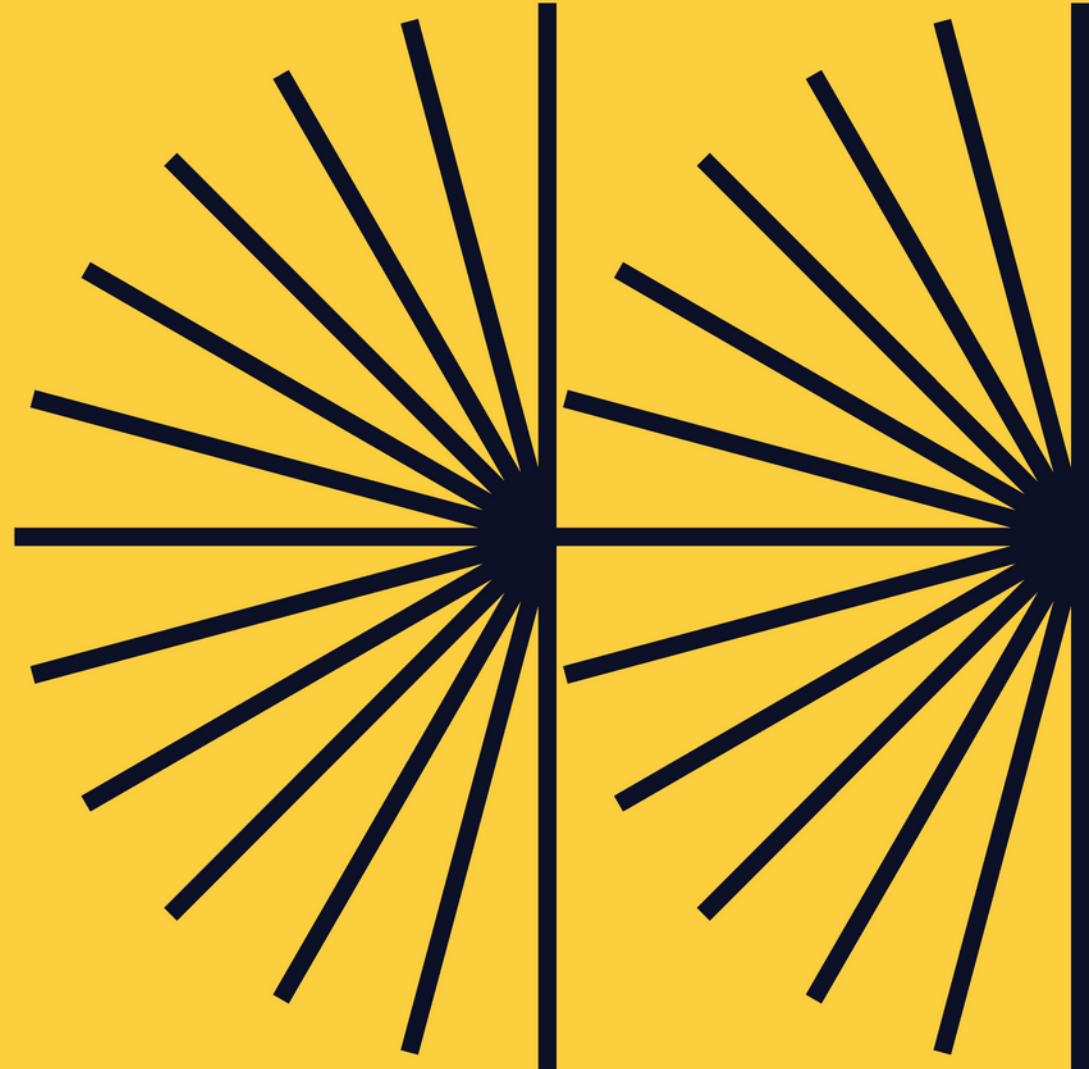
Will we lose our competitive advantage by sharing where our production happens?

- In this age of information-sharing, production locations are rarely a secret - whether you disclose them yourselves or not. This is more about being in control of how and where that information is shared.
- More and more brands are saying that their competitive advantage comes from the quality and type of relationship with their suppliers, not simply whether or not they source from them.
- We do offer an API package for private pushing to obtain IDs without publicly disclosing data.
- To solve the biggest issues of our day, this is a mindset that simply has to change. Closed data has led us to the messy, opaque world we're in today.



Are there privacy concerns with publishing this data publicly?

- The data published on Open Supply Hub is deemed *phone book data*. We're not publishing any data that is considered proprietary or that requires extra layers of protection or privacy.





Case Studies





More effectively achieving transparency & collaboration goals

ASOS began sharing their supplier list on OS Hub to amplify the reach of their transparency work. As that goal quickly came to fruition, they also realized a number of other benefits from sharing their data on an open and collaborative mapping platform:

- Visualizing their supply chain internally; OS Hub geocodes and maps factories as they are uploaded.
- Visualizing their supply chain externally: customers are able to see ASOS' suppliers on their website via their [OS Hub Embedded Map](#).
- Satisfying requirements of industry initiatives, like the Fashion Transparency Index, and increasing their score.
- Understanding which other organizations are connected to their suppliers when issues arise in regions of the world (e.g. the 2022 crisis in Ukraine).
- Enabling greater transparency and collaboration with their third-party brands, by encouraging them to also disclose their suppliers via OS Hub.

Transparency is essential in effectively identifying and addressing risks in our supply chain - because, after all, we can't manage what we don't know.



ASOS is a destination for fashion-loving 20-somethings around the world. ASOS customers can shop a curated edit of products, sourced from nearly 1000 global and local partner brands alongside a mix of fashion-led own-brand labels.

FIND OUT MORE



Finding brands to whom they can report factory conditions

After the military takeover in Myanmar in February 2021, many trade union leaders in the garment sector went into hiding. However, factories continued to operate, and where they were unable to sort problems out directly with management, workers were forced to turn to other supportive labor organizations to help them with complaints about factory conditions. The workers and labor organizations were sometimes able to identify the brands sourcing from the factory concerned, but they lacked contact with them.

This is where the Myanmar Centre for Responsible Business stepped in. Using a combination of OS Hub data, MCRB contacts and additional desk research, MCRB was able to alert Sourcing Managers at affiliated brands to possible problems in their supplier factories. MCRB was able to quickly connect brands to labor organizations who could share specific factory conditions and the wider situation on the ground for workers, which helped brands both investigate specific complaints and better support their ongoing heightened due diligence in the region.

Whenever problems in an industrial zone or a factory are mentioned in social media, we can turn to OS Hub to find out which brands' suppliers might be affected.



The Myanmar Centre for Responsible Business is an initiative to encourage responsible business activities throughout Myanmar. The Centre is a joint initiative of the Institute for Human Rights and Business (IHRB) and the Danish Institute for Human Rights (DIHR).

FIND OUT MORE



Identifying risks & opportunities in apparel facility clusters

When WWF was laying a map of the world's wetlands over the map of apparel facilities in Open Supply Hub, the consistent overlap between wetlands and apparel production zones was immediately striking.

In November 2022, WWF and Open Supply Hub collaboratively published a report outlining the risks and opportunities facing apparel and textile clusters worldwide.

Having an open, accessible map of global apparel facilities enables WWF to quickly see and identify **distribution issues and potential negative (and positive) biodiversity or water impacts, without having to assemble apparel production zone data from scratch.**



WWF is the world's largest conservation NGO whose mission is to stop the degradation of the earth's natural environment and to build a future in which humans live in harmony with nature.

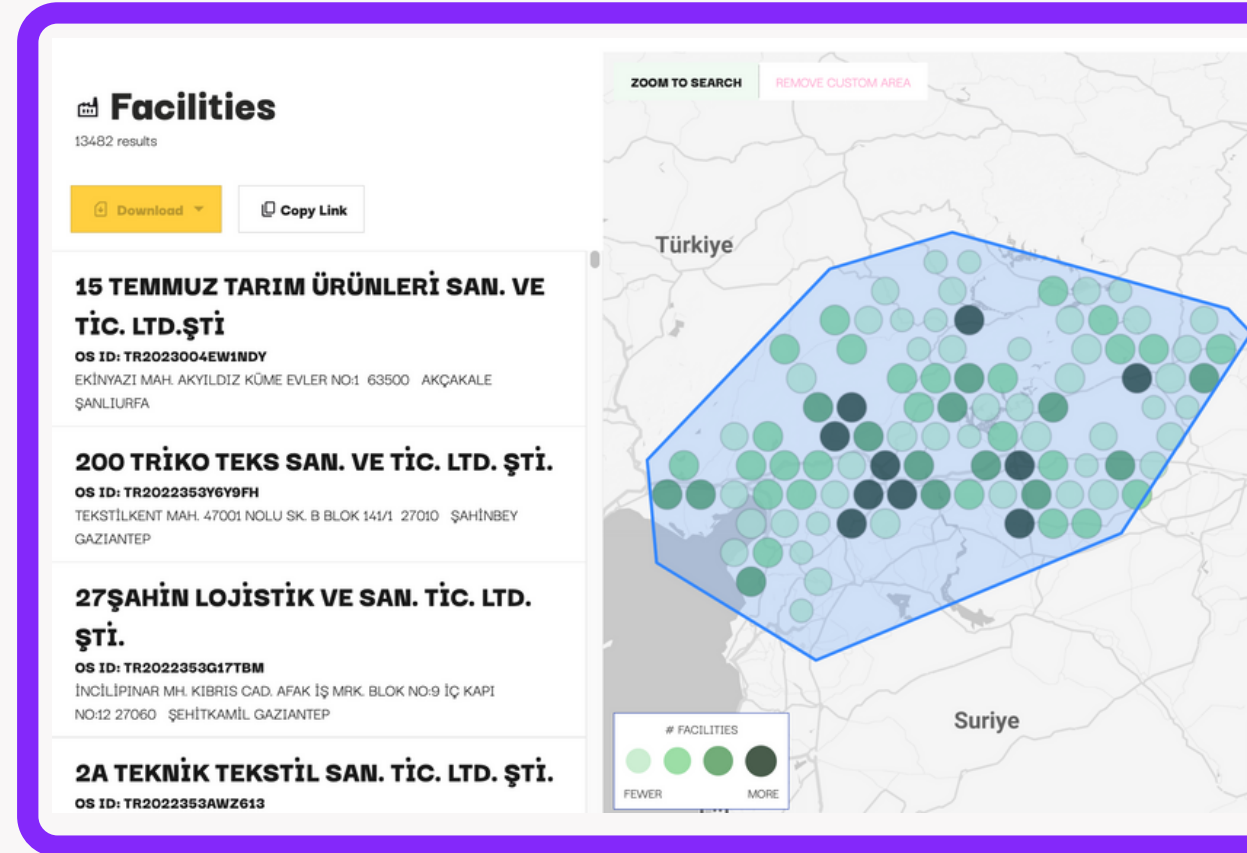
[FIND OUT MORE](#)



Immediate response to earthquakes in Türkiye and Syria: Search for Impacted Facilities

In the aftermath of the devastating earthquakes in Türkiye and Syria, many are looking to understand how to support or respond to communities now in desperate need.

To show which production facilities were likely affected, as well as the organizations connected to those facilities, OS Hub has provided dynamic and filterable searches that outline the approximate area most severely hit and the facilities within it. This dataset has also been layered over Modified Mercalli Intensity Scale (MMI) reports measuring earthquake intensity to determine which listed facilities are located in the hardest hit regions.



FIND OUT MORE



Making the Most of OS Hub

Sharing your production sites on OS Hub is a great first step in opening up your data - but there's so much more to be gained from working with our platform. Here's some inspiration for going beyond transparency for transparency's sake:



Integrate OS IDs into your PLM/sourcing platform



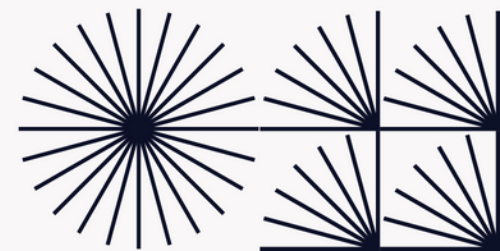
(If they haven't already) Encourage MSIs and Service Providers to Adopt OS IDs so you can create one connected supply chain data ecosystem



Use your link to your supply chain data on OS Hub to easily share your supply chain data internally & externally in a visual, searchable format.



Encourage your suppliers to claim their facilities or share their suppliers, bringing even greater levels of transparency





Making the Most of OS Hub

Sharing your production sites on OS Hub is a great first step in opening up your data - but there's so much more to be gained from working with our platform. Here's some inspiration for going beyond transparency for transparency's sake:



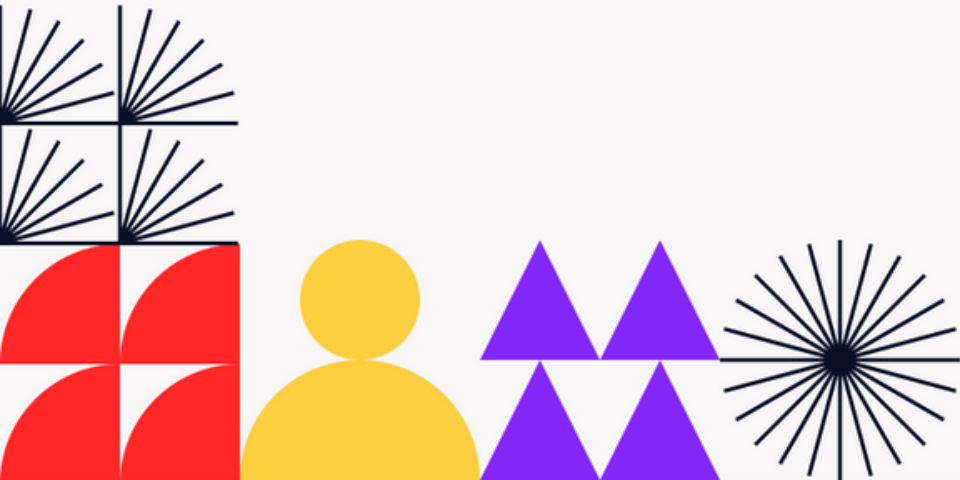
Collective action support:

Find overlap with other orgs to advance capacity building, collaborative grievance mechanisms, & more.



Share OS Hub with other internal teams:

procurement, supplier engagement, CSR, marketing - see how they could use it!



Dive in

Contribute to and work with the largest open database of supply chain data the world has seen.

You can:



Share Data + Receive IDs

Upload supply chain data to OS Hub and receive universal IDs for all the sites you contribute



Search + Collaborate

Make use of this open, global dataset for research, partnership-building & more.



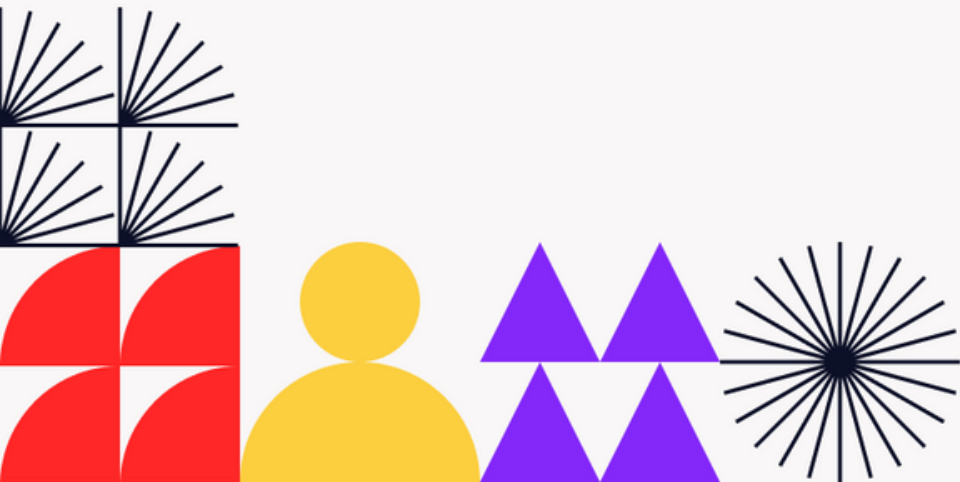
Advocate for OS Hub

Introduce OS Hub to your network. We're happy to join/host webinars & trainings, share newsletter content, and more!



Give Feedback

[Schedule a product feedback session](#) to discuss your use case, challenges, or ideas for the OS Hub platform.





2023

Food & Beverage Open Data Challenge

We're building and opening up the largest cross-commodity supply chain database available for the food & beverage sector.

[Join Us](#)





Thank you!





Frequently Asked Questions

View our full set of FAQs
on our website.

[FULL FAQs](#)



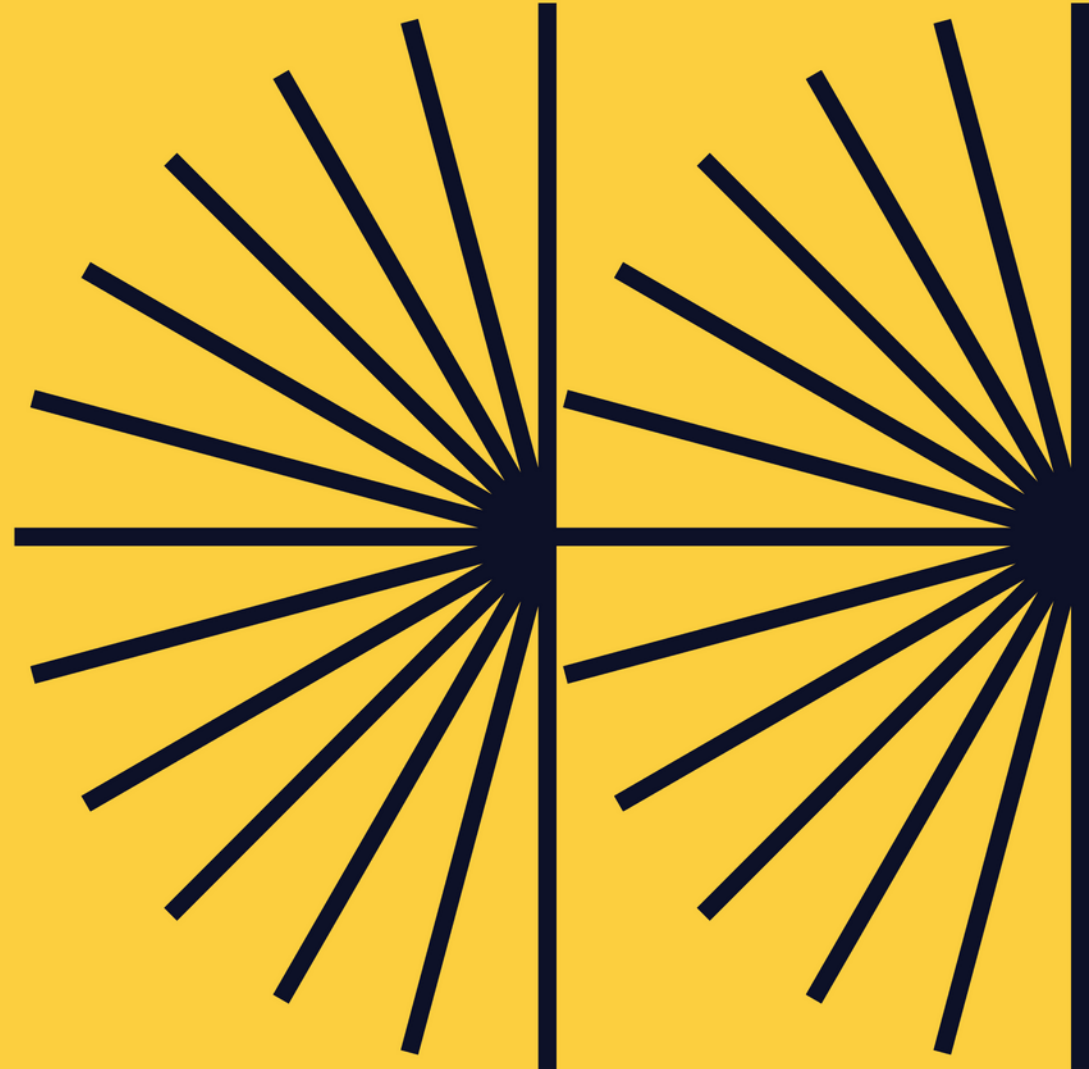


Which supply chain tiers does OS Hub work in?

All tiers, including commodity/raw material level. Because there isn't a universal definition for tier, we use facility &/or processing type to display and filter this data point.

Data contributors can share which tiers they are disclosing in their list name/description and even separate their data into different lists by their definition of tier, if desired.

[FULL FAQS](#)





How do you verify the data in OS Hub?

We don't. Rather than thinking of us as a verifier, think of us as a “steward” for those who are collecting and potentially verifying data themselves.

As an open data platform, we openly share the data submitted and who shared it, so users can make their own decisions about the level of trust they have in the contributor and the data they shared. Think about number of workers, for example: if 20 contributors share the same figure for a site and one contributor has a vastly different number, depending on who that contributor is, might that be helpful information for you?

[FULL FAQS](#)

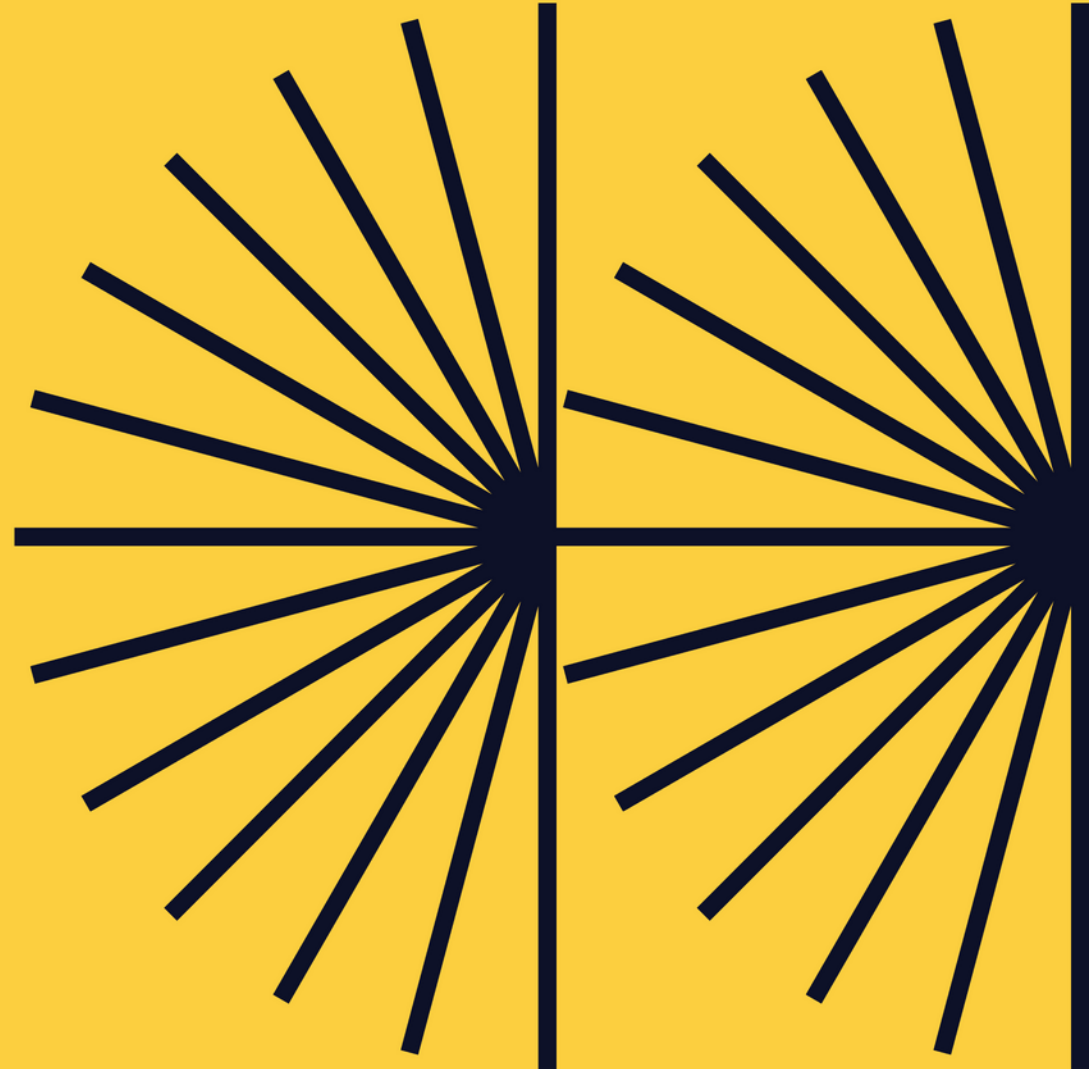


Does OS Hub hold/display any historical data?

This is up to the owner of that data. When a data contributor updates their data in OS Hub, they have the option to make their previous contribution inactive, breaking their connection to any production sites they are no longer connected to.

If you are a researcher and are interested in looking at historical data in aggregate, please do reach out to our team. We're always happy to discuss how OS Hub data could aid in research efforts about global supply chains.

[FULL FAQS](#)





Is OS Hub a membership organization? What are your requirements?

OS Hub is not a membership organization. It is a tool that anyone can use and there is no associated membership or cost (unless you wish to purchase a Premium Feature). We do not mandate frequency of data updates, nor the percentage of supply chain data shared. However, it's worth noting that many membership organizations who do have those expectations of members use or recommend OS Hub as a tool to fulfill their requirements.

[FULL FAQs](#)



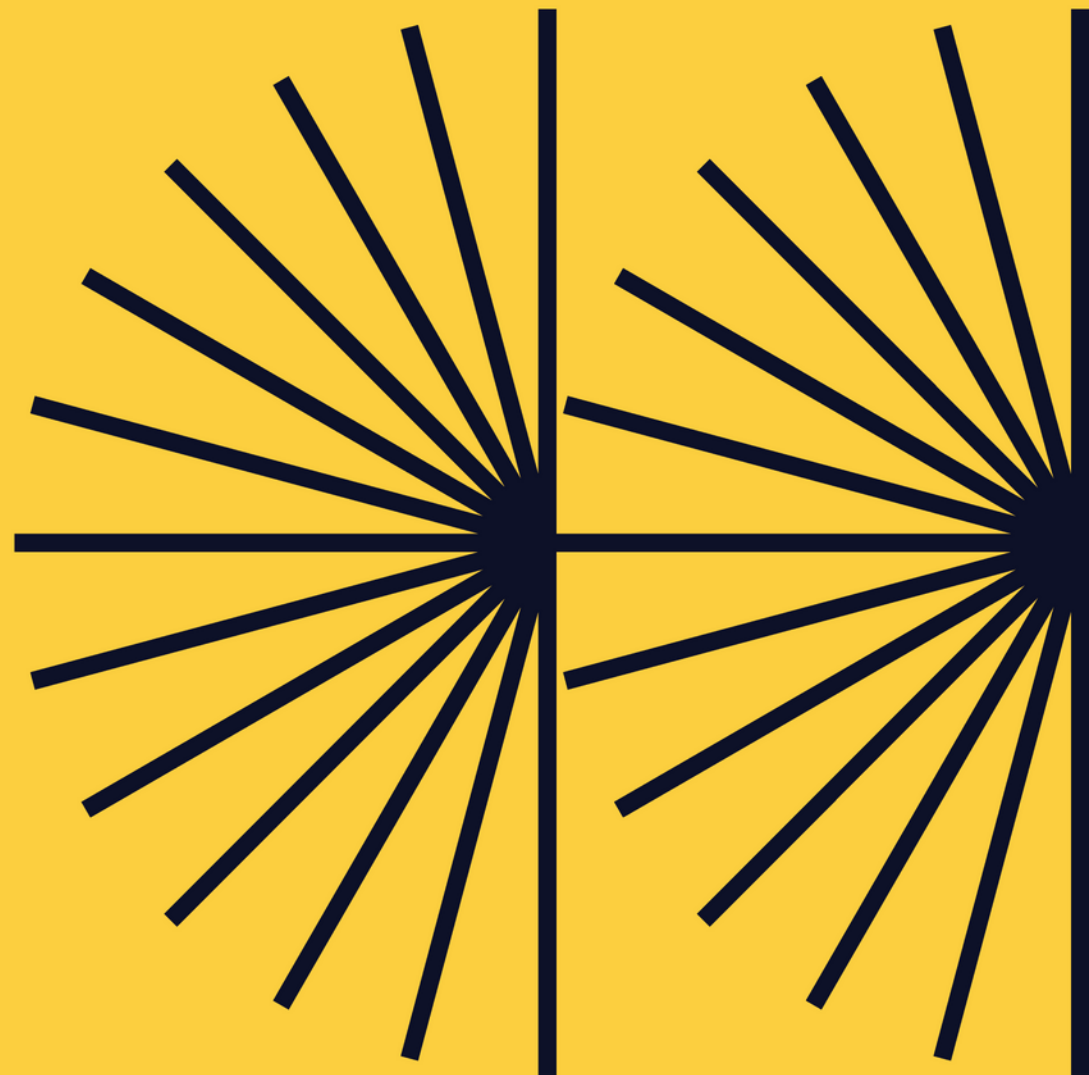


Is OS Hub a transparency or traceability platform?

Think of transparency like a map: these are the locations and who is connected to them. Traceability draws lines through the map, showing how a product moves through it.

OS Hub is a transparency platform. Many traceability platforms are integrating OS IDs, though, so they can easily connect their datasets with others.

[FULL FAQS](#)



How long does it take to get data onto the OS Hub platform, if we're not using the API?

The first step is to look the state of your data and assess how long it will take to get into our CSV/Excel template format. Once your data is prepared and uploaded, it takes 2-5 business days for our team to review your data. If approved, you'll receive an email once your list is processed and live in Open Supply Hub. If your list is rejected, you will receive an email from the OS Hub team with directions on how to update your list, and improve the quality of your data to meet quality standards. From there, you can update your data and repeat the upload process.

[FULL FAQS](#)

